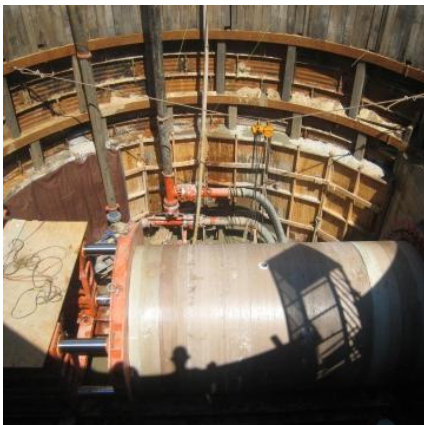


## Lower Catoma Interceptor Replacement Montgomery, AL



### PROJECT OVERVIEW AND CHALLENGES

Bradshaw Construction Corporation completed four soft ground tunnels under state roads and a CSX railroad by microtunneling as part of a 37,000 linear foot long sewer pipeline project. The tunnels ranged in diameter from 83 to 96 inches and 110 to 220 linear feet in length. The smaller tunnels were direct jack 78-inch Hobas pipe, and the larger railroad tunnels were 2-pass Permalok steel casing and 78-inch Hobas carrier pipe. The microtunneling equipment performed admirably through the wet, fine sand below the water table.



### PROJECT INFORMATION - 464

**OWNER:**

City of Montgomery  
Water Works and Sanitary Sewer  
Board  
Henrique Rizzo  
334.206.1600

**ENGINEER:**

CH2M Hill  
4121 Carmichael Road #400  
Montgomery, AL 36106  
David Stejskal, 334.271.1444

**CONTRACTOR:**

SJ Louis Construction, Inc.

**COMPLETION DATE:**

10/13/2008

**GEOLOGY:**

Fine Sand

**EXCAVATION METHOD:**

RASA MTBM 83" & 96" Ø

**MINING DIMENSIONS:**

415' x 83" Ø & 236' x 96" Ø

**FINAL LINING:**

78" FRP

**FOR MORE INFORMATION:**

Eric Eisold, Vice President  
410.970.8300  
eeisold@bradshawcc.com  
Refer to Project 464